

**CARPLAY.LT**

**CARPLAY/ANDROID AUTO**

**Installation Instructions**

**And User Guide for VW/SKODA/SEAT**

## Summary

### Contents

<b>Summary</b> .....	2
<b>Introduction</b> .....	3
<b>Kit contents</b> .....	4
<b>Recommended and useful tools</b> .....	5
<b>Head Unit Removal Videos</b> .....	6
<b>Multi Media Interface Connection Scheme</b> .....	7
<b>Setting up the DIP switches on the MMI</b> .....	8
<b>Connecting to multimedia interface with a mobile phone</b> .....	9
<b>1. Wired Carplay Connection</b> .....	9
<b>1.1. Wireless CarPlay Connection</b> .....	10
<b>1.2. Wireless AirPlay Connection</b> .....	12
<b>1.3. Wired Autolink</b> .....	13
<b>1.4. Wired Android Auto</b> .....	14
<b>1.5. Wireless Android Auto Connection</b> .....	15
<b>USB / Media</b> .....	17
<b>Camera / AV-in</b> .....	17
<b>Setting</b> .....	18
<b>SUPPORT</b> .....	19

## Introduction

Thank you for making a purchase from Carplay.lt! The Carplay/Android Auto is DIY friendly, but if you're not fond of working on your car, don't worry. You can always take your kit along with these installation instructions.

If you will be installing the kit by yourself then it is recommended to do so in a clean, spacious, and well lit and climate-controlled garage without pressing time constraints. It's also possible to perform the installation in a driveway or a parking lot if you prepare the correct tools and the weather is appropriate.

Installation requires disassembly of various trim pieces, so it's best to take your time, be gentle, careful and diligent in keeping track of which screw and clip came from where in order to reinstall the parts correctly. **Make sure to test the device's operation before final reassembly.**

**Please read the instructions before starting the installation.**

This manual contains information on how to install the Carplay/Android Auto module in your car.

## Kit contents

1. Carplay/Android Auto box
2. Plug and play wiring loom
3. Screen (LVDS) cable
4. USB/Video cable
5. Wi-Fi antenna.



## **Recommended and useful tools**

Carplay.lt Trim Tool Kit (Highly Recommended);

T-20, T-25, and T-30 Torx Bits;

Head Screwdriver;

Electrical Tape;

Zip Ties;

Pliers;

8mm and 10mm Socket and Ratchet;

3mm Allen Key;

Double Sided Mounting Tape or Velcro;

Giant zip-tie or coat hanger for pulling cables;

Flashlight.

## Head Unit Removal Videos

Youtube video guide link, how to remove head unit from **VW Tiguan**;

<https://www.youtube.com/watch?v=ujP-NXcp84s&t=259s>

Youtube video guide link, how to remove head unit from **VW Jetta**;

<https://www.youtube.com/watch?v=ZivOnfJr35k>

Youtube video guide link, how to remove head unit from **VW Golf**;

<https://www.youtube.com/watch?v=JMQRKeQ-O3E>

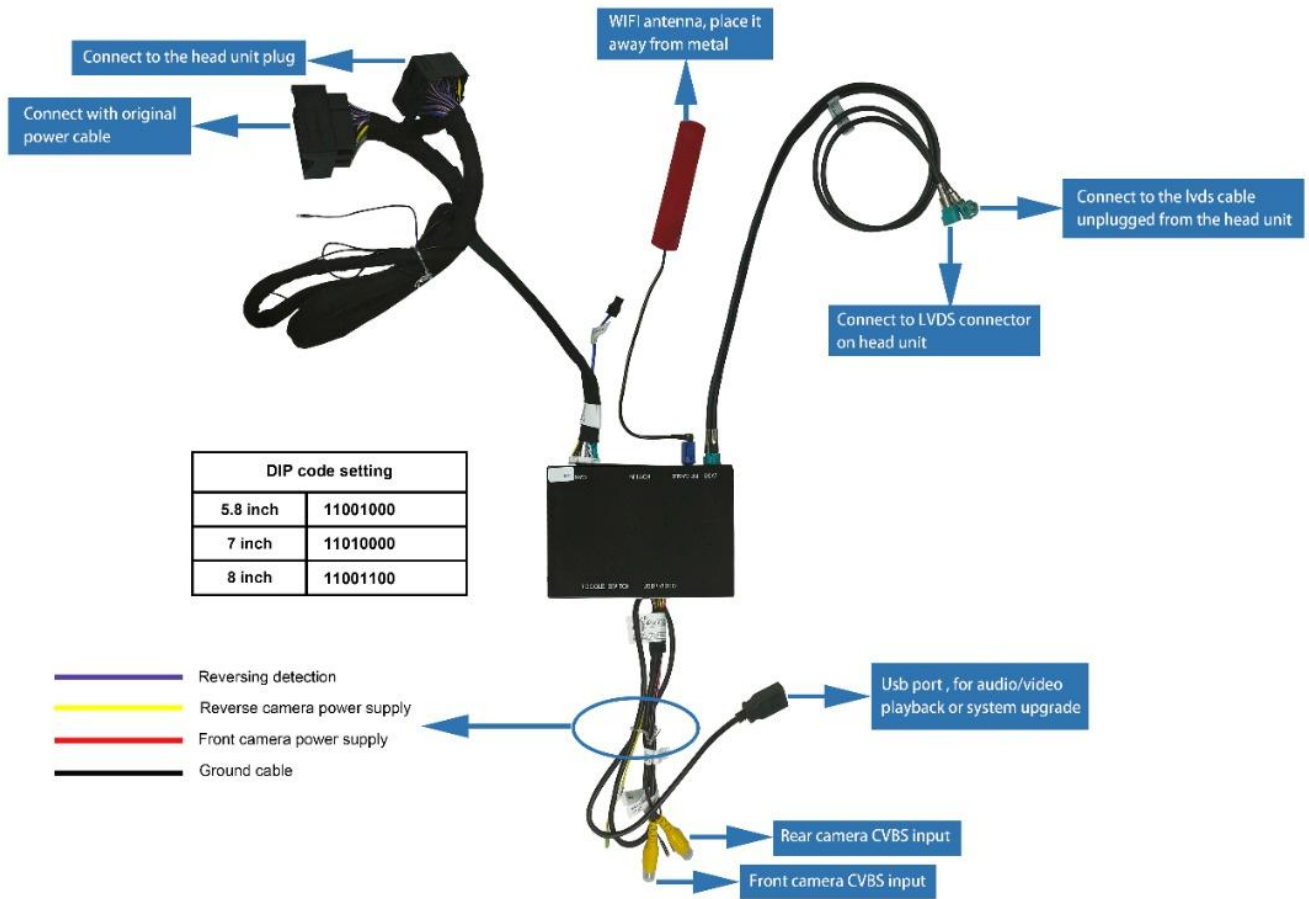
Youtube video guide link, how to remove head unit from **Skoda**

<https://www.youtube.com/watch?v=u2NkXLiZxHg>

Youtube video guide link, how to remove head unit from **Seat/VW**

<https://www.youtube.com/watch?v=2O70vL4nuqs>

### Multi Media Interface Connection Scheme



## Setting up the DIP switches on the MMI

In order For the MMI module to work correctly the little DIP switches on the side of the MMI module must be set up according to your vehicle's specifications.

**Important Note:** Every time you change DIP switch settings make sure to disconnect the MMI by pulling out the power cable.

There are total 8 toggle switches, which are used to set up the module according to the head unit and the size of the screen. There will be only one combination that will work correctly in your car. By testing one after another, please make sure you disconnect the module from the power CAN cable. Toggle switches has two positions OFF (0) and ON (1). Please see table below to understand how toggle switches are adjusted and marked in the scheme.



### DIP code setting according to original screen size:

DIP code setting	
5.8 inch	11001000
7 inch	11010000
8 inch	11001100

## Connecting to multimedia interface with a mobile phone

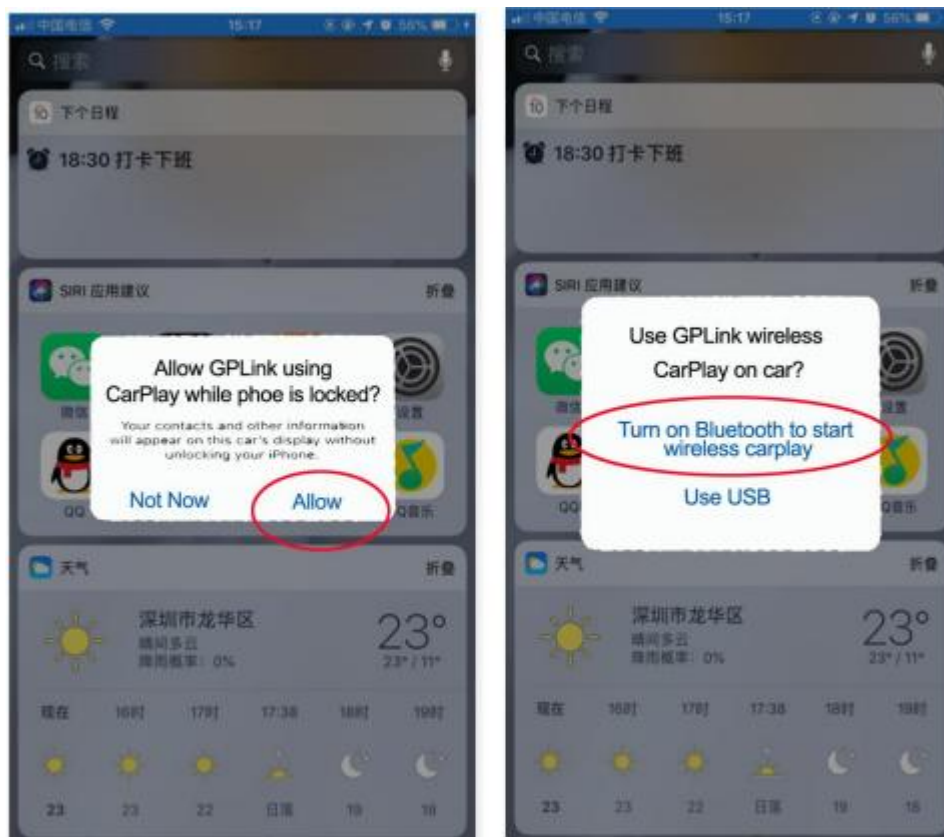
### 1. Wired Carplay Connection

Step 1: Connect your iPhone to CarPlay decoder via USB cable.

Step 2: Allow your phone to use CarPlay

Step 3: Choose by Bluetooth or by USB

(Siri function will use your car voice button on steering wheel control)



## 1.1. Wireless CarPlay Connection

Step 1: Open the iPhone WiFi

Step 2: Open the iPhone Bluetooth

Step 3: Search the Bluetooth of CarPlay decoder

Step 4: Pair the Bluetooth

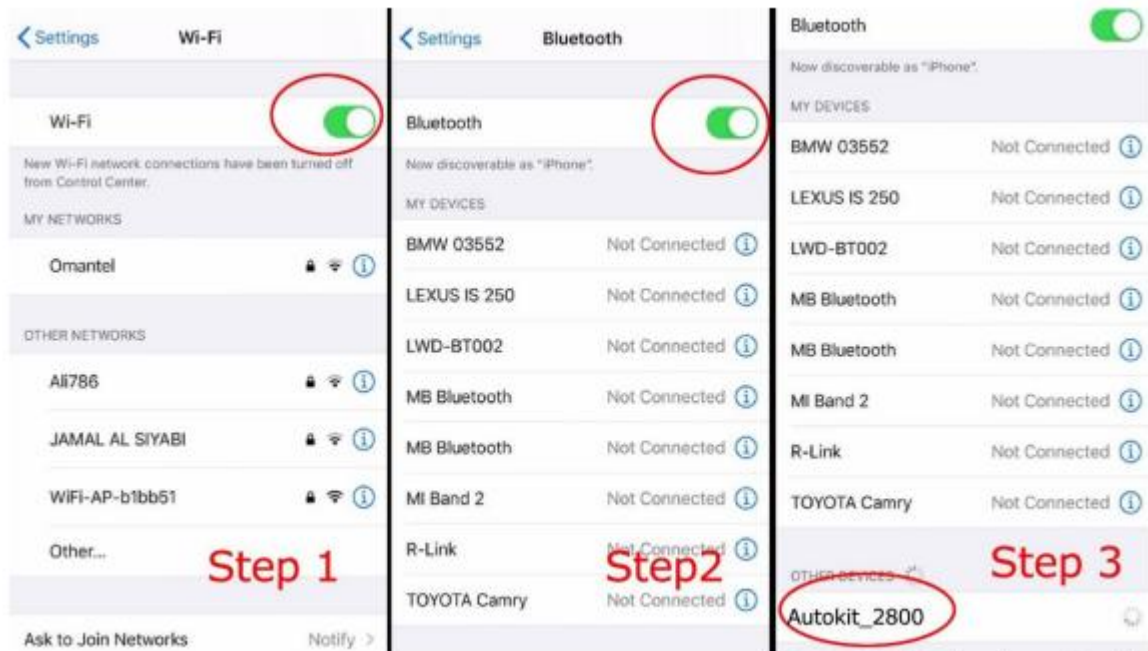
Step 5: Allow the sync

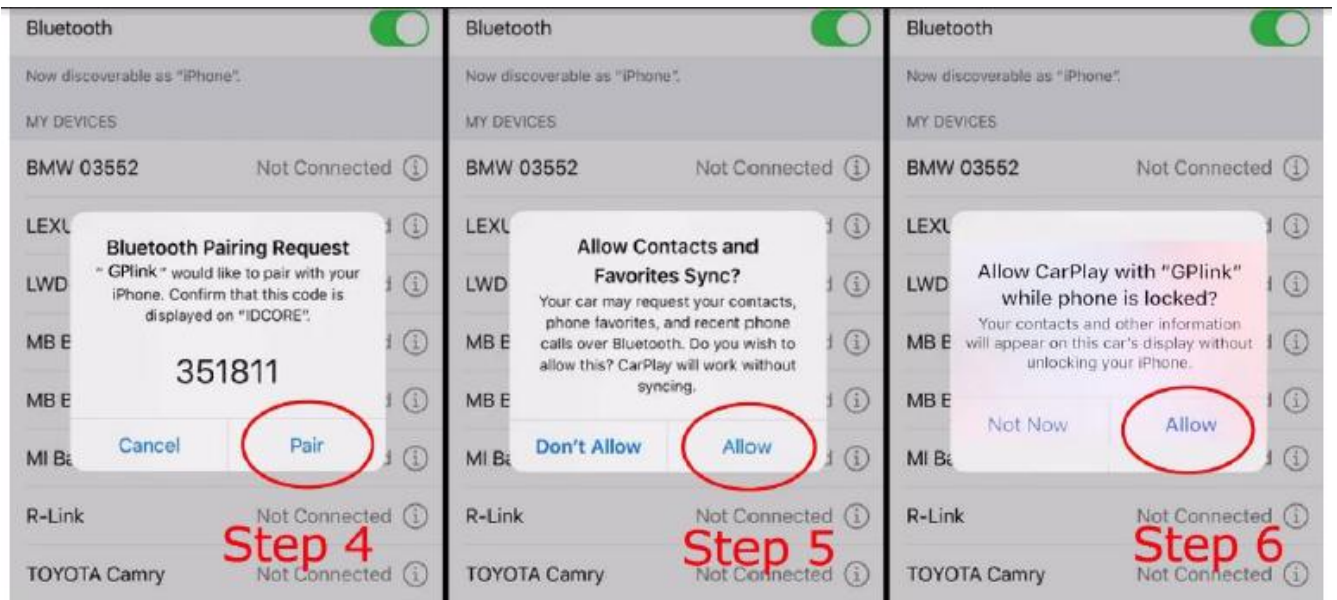
Step 6: Use CarPlay

Step 7: CarPlay logo appear on the screen

Step 8: Use the CarPlay.

(Siri function will use your car voice button on steering wheel control)





## 1.2. Wireless AirPlay Connection

Here will appear the prompt below after clicking AirPlay option in the main menu.



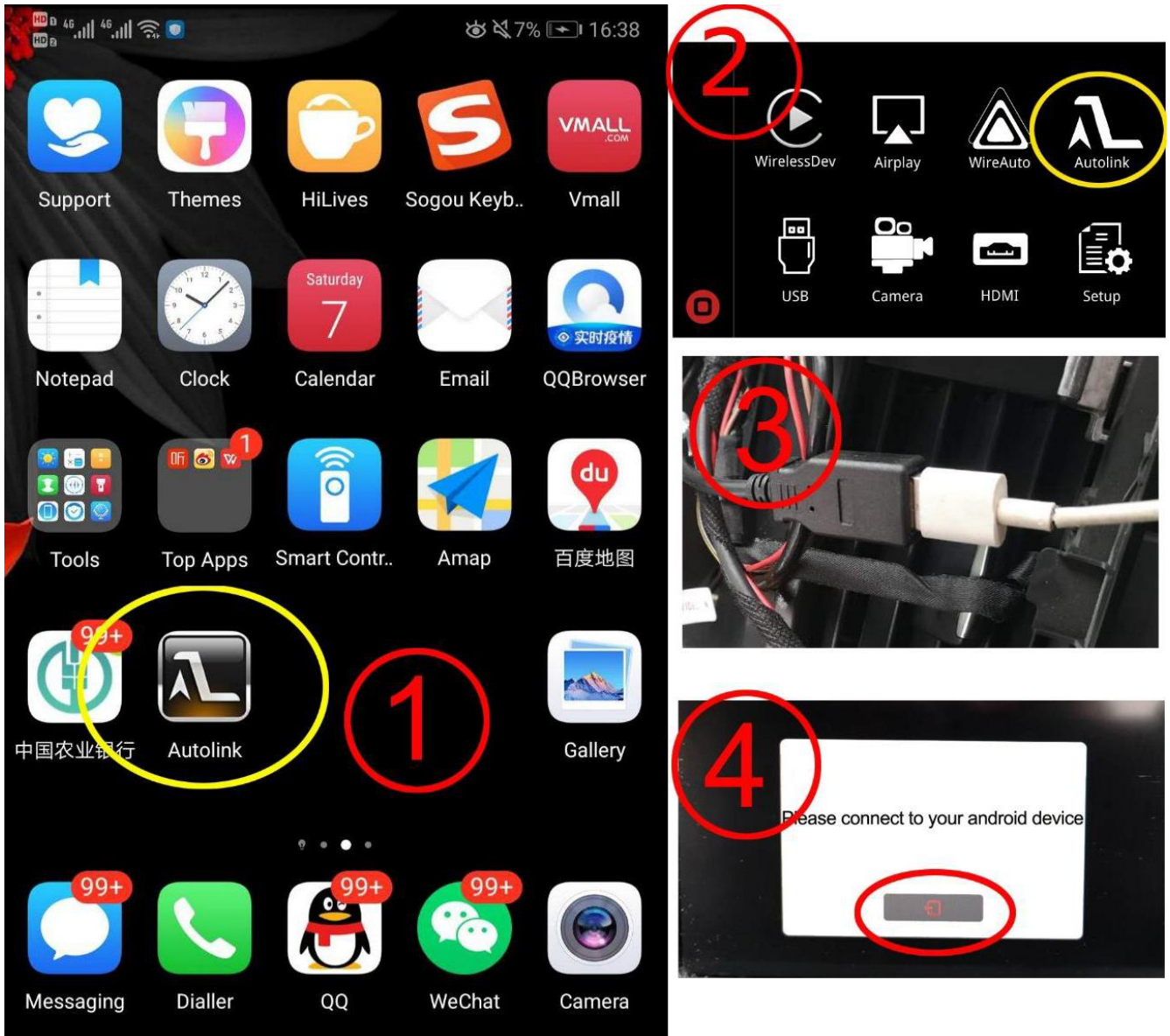
Find the corresponding SSID in mobile phone Wi-Fi, such as CarPlay4e09c9, and input the password 88888888, slide up from the lower part of the iPhone screen and select AirPlay in the menu option to finish the wireless AirPlay connection.



### 1.3. Wired Autolink

Step 1 require your android phone to install the Auto link software.

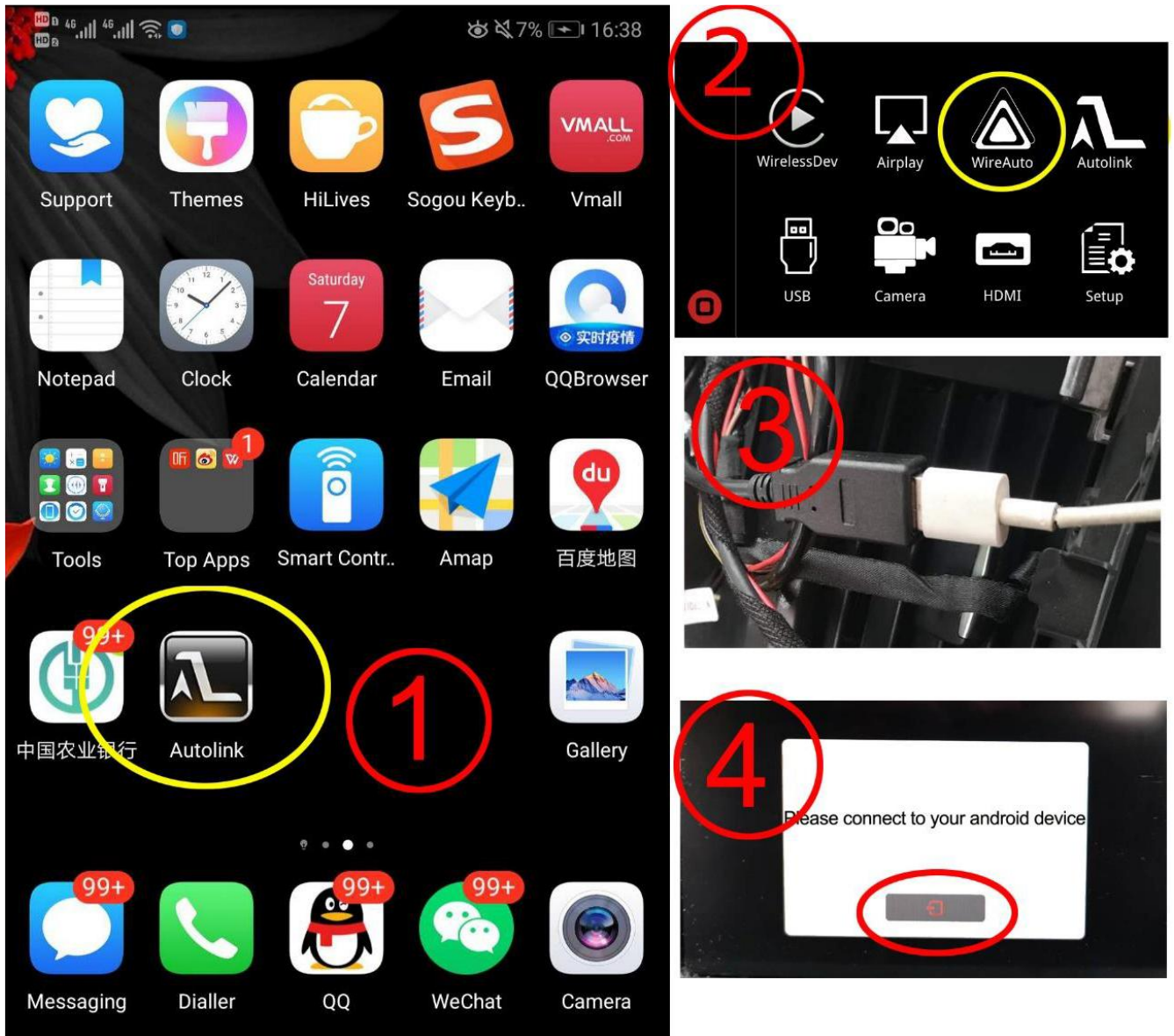
Please make sure to connect your android phone USB cable to USB cable of CarPlay decoder, as showed in step 3.



### 1.4. Wired Android Auto

Step 1 require your android phone to install the Android Auto software.

Please make sure to connect your android phone USB cable to USB cable of CarPlay decoder, as showed in step 3.



## 1.5. Wireless Android Auto Connection

Before use the wireless android auto function, please make sure your android phone support wireless android auto function.

Up to now, there are Samsung and Google mobile phone support wireless android auto, the detail mobile models are showed as below,

Samsung S8, S9, S10, Note 8, Note 9, Note 10 (Android system require Android 9 or above, Android Auto software require 4.7 version or above).

Google Pixel, Nexus 5x, Nexus 6p, (Android system require Android 8 or above, Android Auto software require 3.1 version or above).

Connection steps:

Step 1: It require your android phone to install the Android Auto software.

Step 2: It require your android phone in the English language.

Step 3: Open the Android phone's Wi-Fi

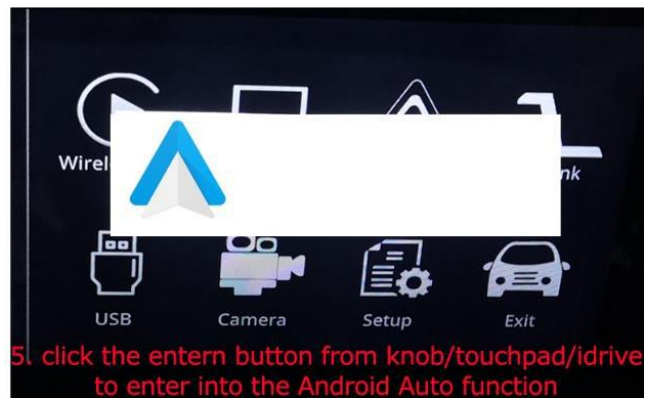
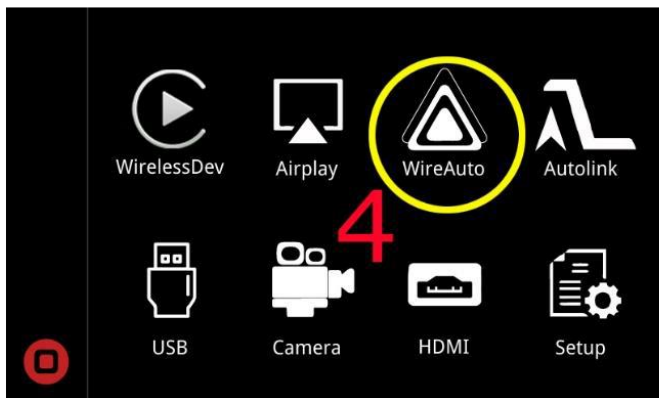
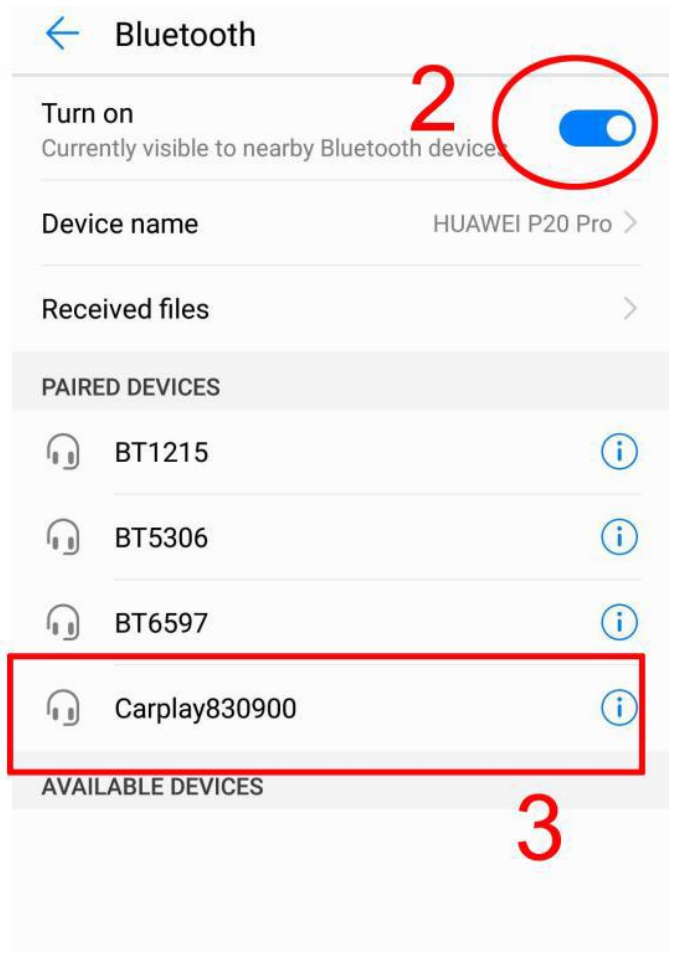
Step 4: Open the Android phone's Bluetooth

Step 5: Search the Bluetooth of CarPlay decoder, like CarPlay830900 or something similar.

Step 6: Pair the Bluetooth

Step 7: Click the Android Auto button in the decoder main menu to enter into the wireless Android Auto function.

Step 8 : when the car screen shows you the Android Auto logo, click the enter button from your car knob / touchpad / remote touch to enter into the Android Auto function.

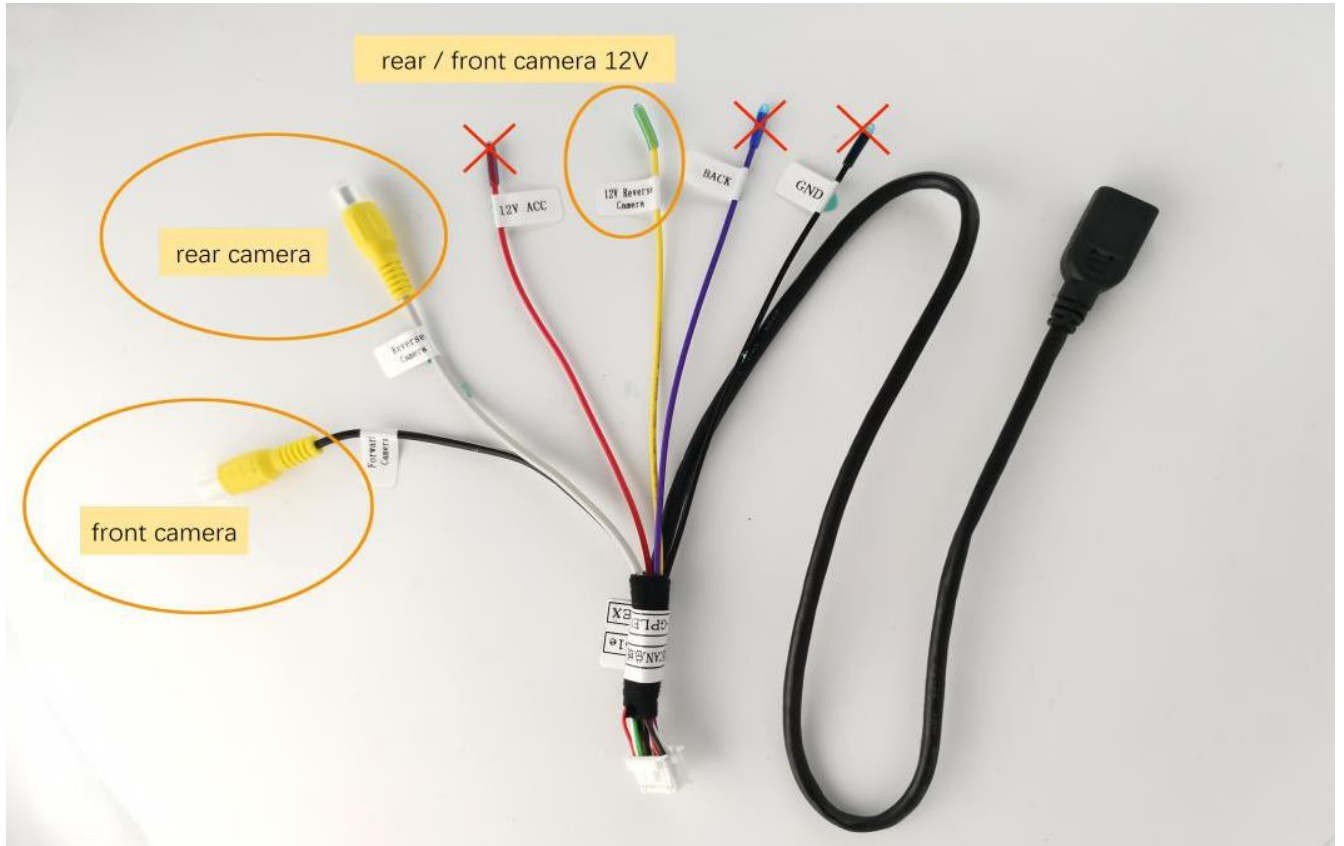


## USB / Media

Insert the USB flash drive into the USB port and click the USB icon in the main menu. The system will play it automatically.

## Camera / AV-in

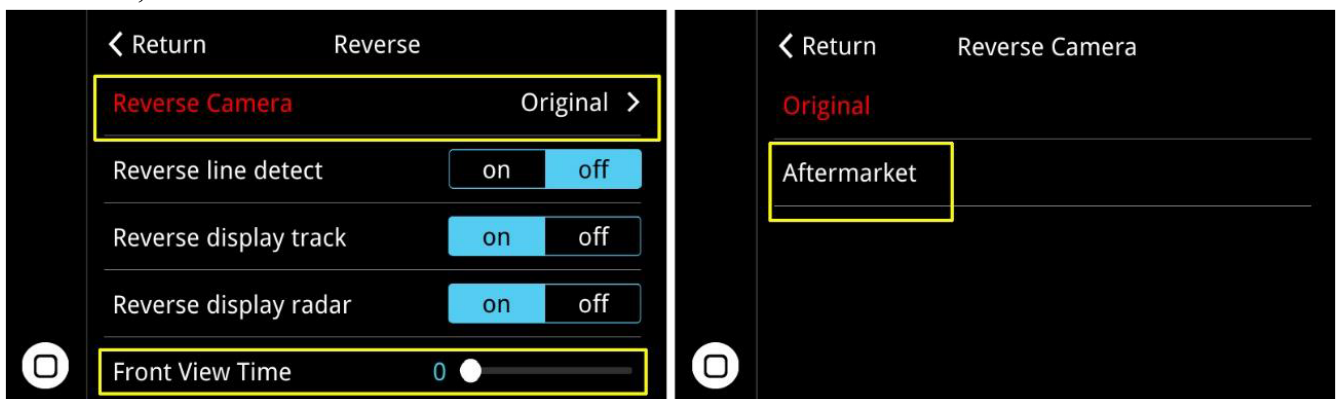
Aftermarket Rear View Camera & front view camera connection



After finish the aftermarket camera connection, you need to set the camera.

Rear view camera setting: click the “Setting” button from the decoder main menu, choose “Reverse”, and then set the reverse camera into aftermarket.

Front view camera setting: click the “Setting” button from the decoder main menu, choose “Reverse”, and then set the front view time between 0 to 15 seconds.



## Setting

Items	Parameter	Default setting
Language	English, Italian, Spanish, Turkish, etc.	English
Display	Brightness, Contrast, Saturation, Hue	Brightness, etc.
Audio	Volume	17
	EQ	Standard
	Loudness	Off
	Mic Echo PreConfig	Default
	Microphone Volume	18
	Microphone preamp (OP)	4
	Microphone preamp (PGA)	24
	Microphone Delay	0
AEC quality	1	

Items	Parameter	Default setting
Reverse	Reverse camera	Aftermarket camera
	Reverse line detection	Off
	Reversing display track (Aftermarket 360 camera, please choose Off)	On
	Reversing display Radar (Aftermarket 360 camera, please choose Off)	On
	Front View Time	0-15
	Reverse match original	Standard
WiFi channel	6,36,149	36
Right hand drive	Right hand drive or Left-hand drive	Off
Camera mirror		Off
Switch L/R key to D/U key	Switch Left /Right key to Down/Up key	Off
Back switch display	"back" button and "menu" button interchangeable	Off
CarPlay left scrap	Adjust parameters on the left side of the screen	0
CarPlay right scrap	Adjust parameters on the right side of the screen	0
Software update	System update, MCU update, Logo Image Updates, CarPlay Icon Update	No
System version	System version	System version

## SUPPORT

Please contact us via purchase platform if you need any help with purchase, connection or etc.

**STAY CONNECTED!**